



# EMPIRE MINE STATE HISTORIC PARK

Empire Mine State Historic Park is the site of one of the oldest, deepest, and richest gold mines in California. In operation for more than 100 years, the mine extracted 5.8 million ounces of gold before it closed in 1956. The park contains many of the mine's buildings, the owner's home and restored gardens, as well as the entrance to the 367 miles of abandoned and flooded mine shafts.

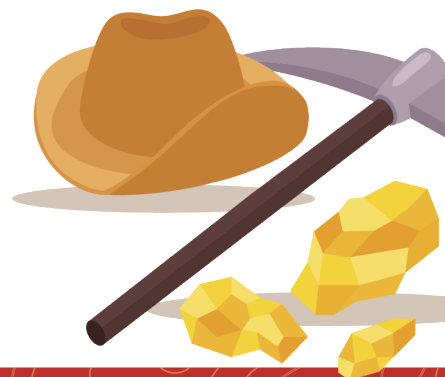
[View Park Brochure](#)



## Day Trip Option

The visitor center features a model representing 5 square miles of the underground workings of the "Secret Room." Outside, explore both the historic mine area and the forested walking trails.

Tips on how to recreate responsibly during your visit are available at [parks.ca.gov/SafetyTips](https://parks.ca.gov/SafetyTips).



[www.parks.ca.gov/AdventurePass](https://www.parks.ca.gov/AdventurePass)